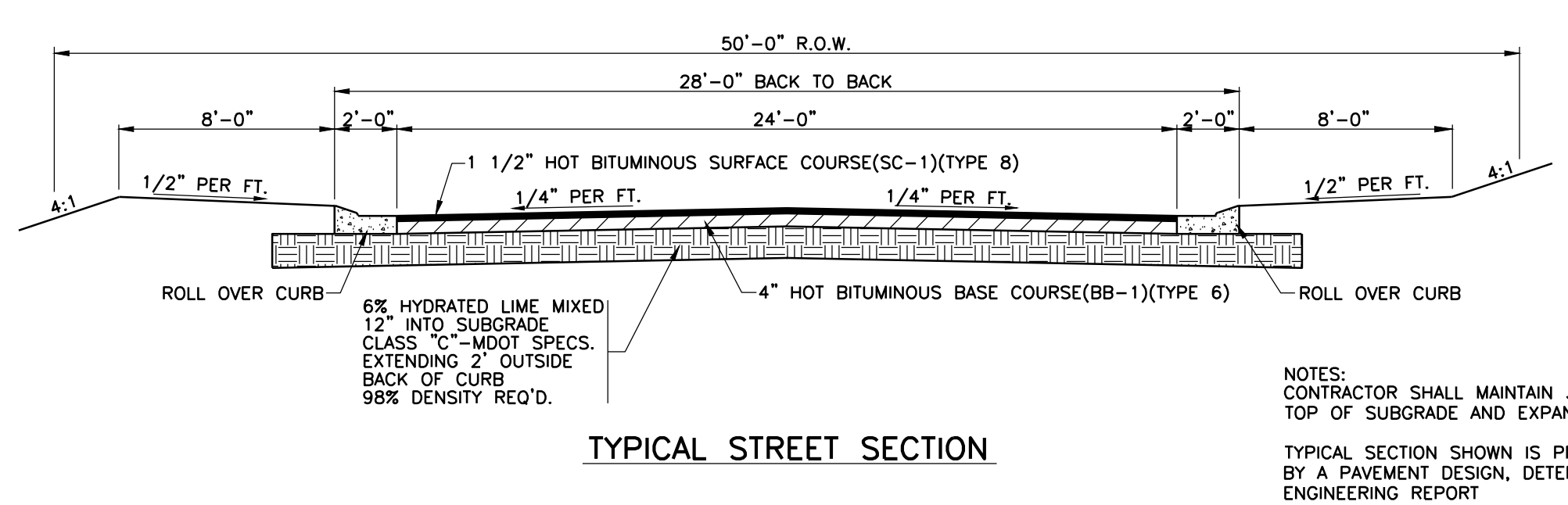
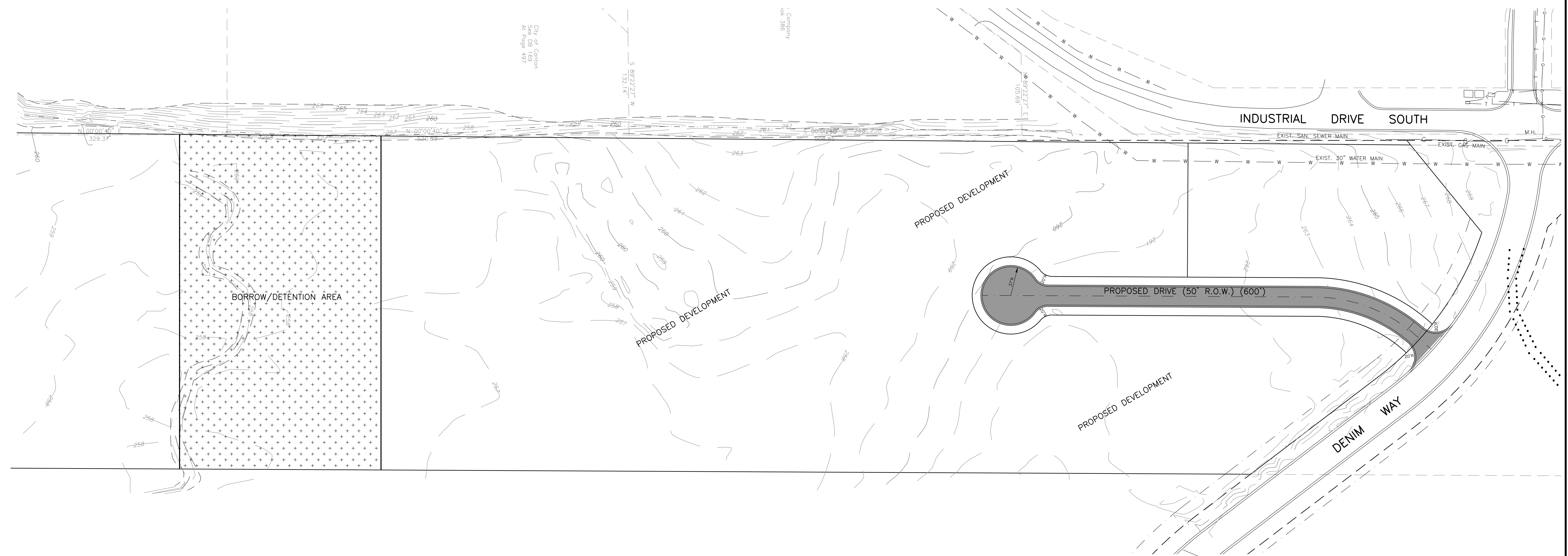


City of Canton
At Page 497

Company
ok 386



NOTES:

CONTRACTOR SHALL MAKE EVERY EFFORT TO KEEP EXISTING STREETS FREE AND CLEAN OF DEBRIS DURING CONSTRUCTION.

ALL CONSTRUCTION SHALL BE IN ACCORDANCE WITH THE SUBDIVISION REGULATIONS FOR MADISON COUNTY, MS.

CONTRACTOR SHALL CONTACT MISSISSIPPI ONE CALL SYSTEM TO LOCATE AND MARK ALL UNDERGROUND UTILITIES BEFORE ANY EXCAVATION IS PERFORMED ON SITE.

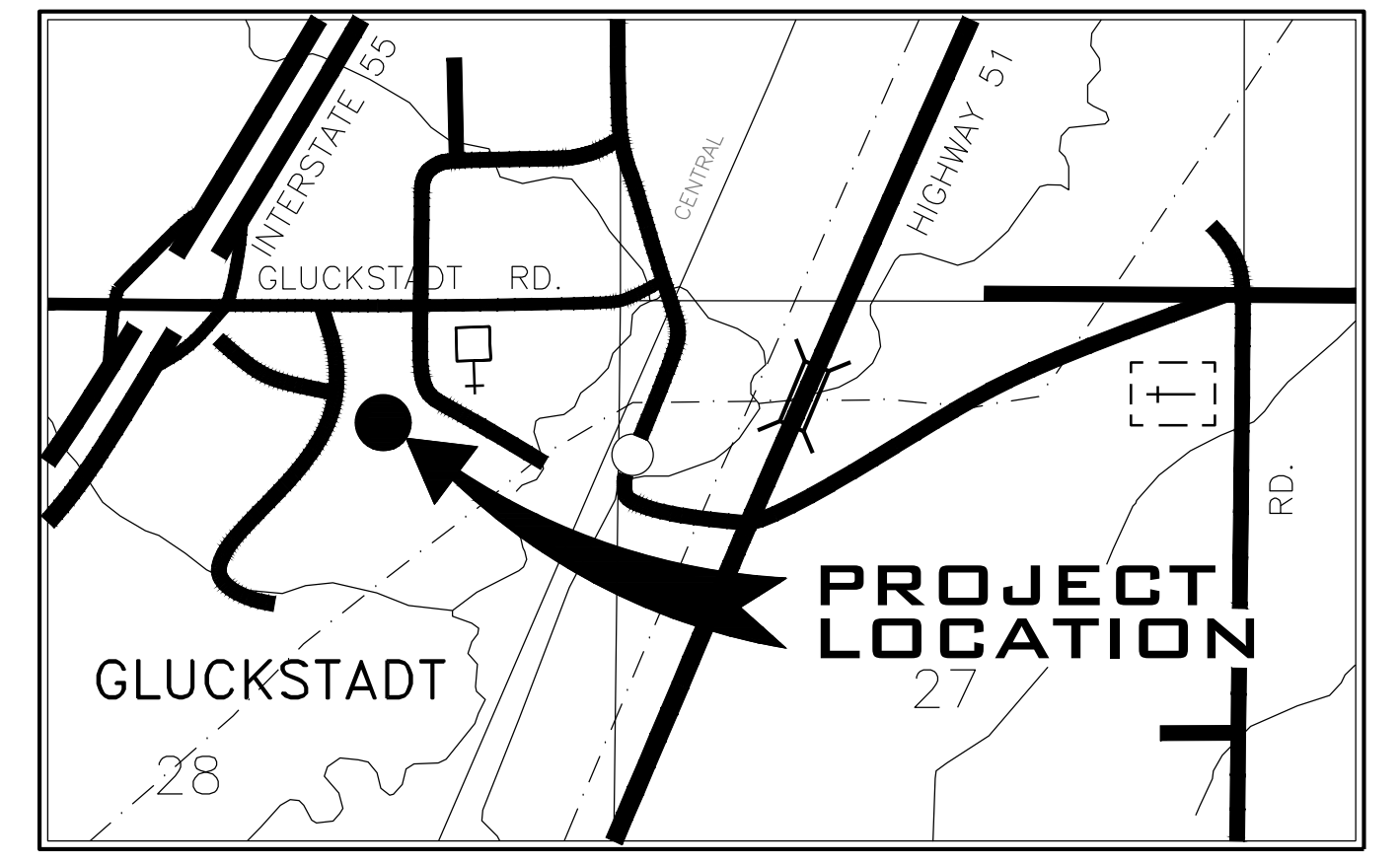
ALL RADIIUSES ARE MEASURED TO THE BACK OF CURB.

SURVEYOR'S CERTIFICATE OF COMPLIANCE
STATE OF MISSISSIPPI
COUNTY OF MADISON

I, RONALD C. McMASTER, JR., PROFESSIONAL ENGINEER AND SURVEYOR, DO HEREBY CERTIFY THAT THE MONUMENTS AND MARKERS SHOWN HEREON ARE IN PLACE ON THE GROUND AND THE PLAT AND PLAN SHOWN AND DESCRIBED HEREON ARE A TRUE AND CORRECT REPRESENTATION OF A SURVEY TO THE ACCURACY DESIGNATED IN THE SUBDIVISION REGULATIONS FOR MADISON COUNTY, MISSISSIPPI.

WITNESS MY SIGNATURE THIS THE _____ DAY OF _____, 2015.

RONALD C. McMASTER, JR., PROFESSIONAL ENGINEER AND SURVEYOR



OWNER:
GIDEON REAL ESTATE
103 PLANTATION COVE
MADISON, MS 39110
PH. 601-853-2556

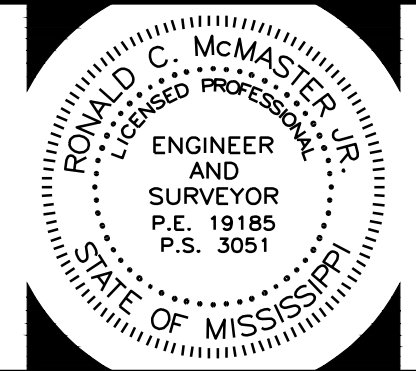
Revisions				
#	Date	Nature	By	App'd.

Project No.	M-2350	Designed By	R.C.M.
Date	10/12/2015	Drawn By	D.P.
Scale	SEE ABOVE	Checked By	R.C.M.

COMMERICAL OFFICE & STORAGE PHASE 1 GLUCKSTADT, MS

McMASTER & ASSOCIATES, INC.
CIVIL ENGINEERS & LAND SURVEYORS

212 WATERFORD SQUARE
SUITE 300
MADISON, MS 39110
601.605.1090



PRELIMINARY
PLAT

1